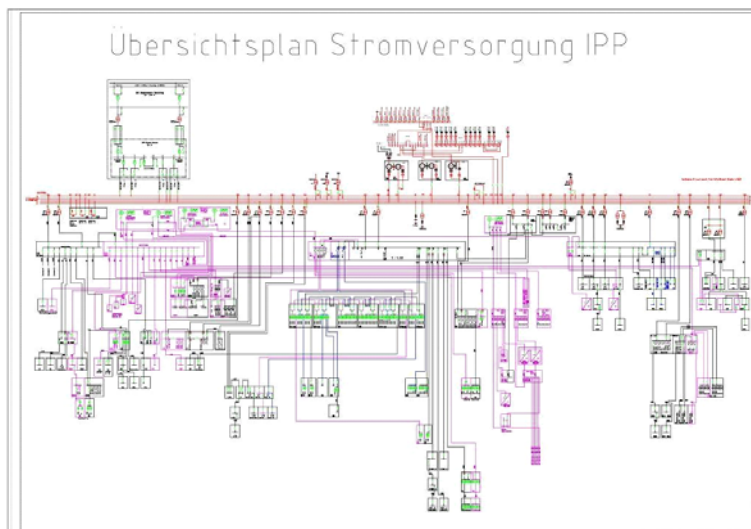


# Garching

## Combined Heat & Power Plant Electrical Engineering



Regierungsbaumeister  
**SCHLEGEL**



### Client

MPI für Plasmaphysik

### Period

since 2009

### Project Cost

2.950.000 €

### Abstract

Max-Planck-Institute for Plasma Physics (IPP), located in Garching adjacent to Munich, has intended a combined heat and power plant with an absorption cooling machine to cool down its data processing centre. In this regard, Regierungsbaumeister Schlegel GmbH & Co. KG is working on the corresponding electrical engineering design. Hereby, about 2 MW electrical power is coupled out and fed to the existing 10 kV network. The IPP consists of about 60 buildings with altogether 120 transformer and 36 electric distribution stations.

### Scope of Service

pre-design, design, approval design,  
execution design, preparation of tender  
documents, site supervision, documentation

### Technical Data

Combustion capacity	4.8 MW
Electric nominal capacity	2.0 MW
Existing plant network	10 kV